

**HDRUK**  
Health Data Research UK

UK Health Data  
Research Alliance



# Applied social care research using routine data: potential and challenges

## A welcome from Health Data Research UK

David Seymour, Alliance Executive Director, Health Data Research UK

10<sup>th</sup> December 2020



**HDR UK's mission is to unite the UK's health data to enable discoveries that improve people's lives**

**Our 20-year vision is for large scale data and advanced analytics to benefit every patient interaction, clinical trial, biomedical discovery and enhance public health.**

# Timeline to this workshop



**NIHR ARC Induction meeting, London**  
14 October

**Telephone Conference call**  
between HDR UK and  
representatives of different  
NIHR ARCs  
7 January 2020

**October**  
**2019**

**January**  
**2020**

**Today**

**Email exchange**  
**with JM**  
23 Oct 2019

**Follow up actions note included:**

- Encourage NIHR ARCs to consider Better Care call
- Jointly host a workshop on social care data 'later in 2020'

# Timeline to this workshop

Telephone Conference call between HDR UK and representatives of different NIHR ARCs 7 January 2020

NIHR ARC Induction meeting, London 14 October

October 2019

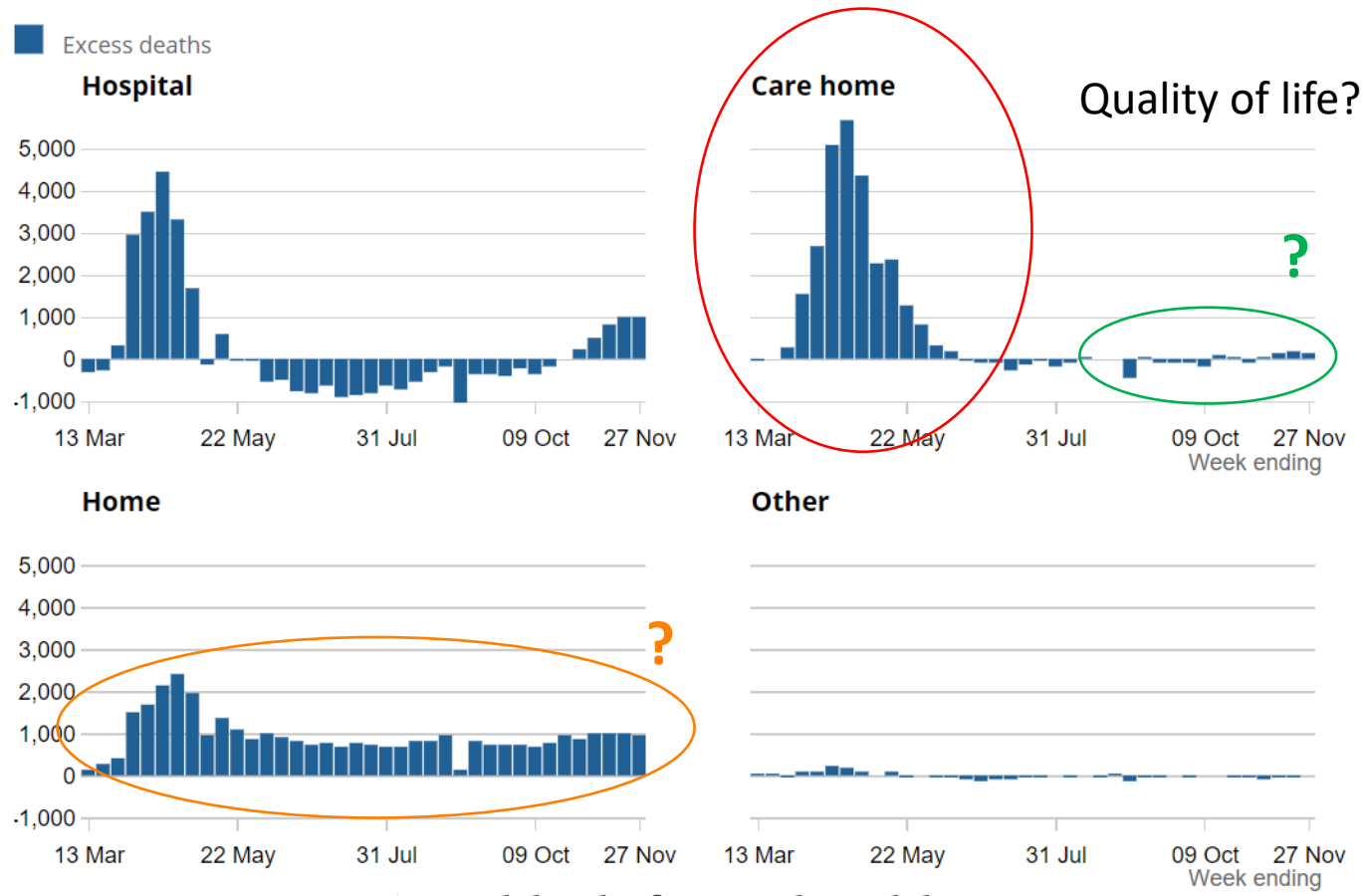
January 2020

Email exchange with John MacLeod 23 Oct 2019

Follow up actions note included:

- Encourage NIHR ARCs to consider Better Care call
- Jointly host a workshop on social care data 'later in 2020'

Number of excess deaths by place of occurrence, England and Wales, registered between 7 March 2020 and 27 November 2020



Source: ONS

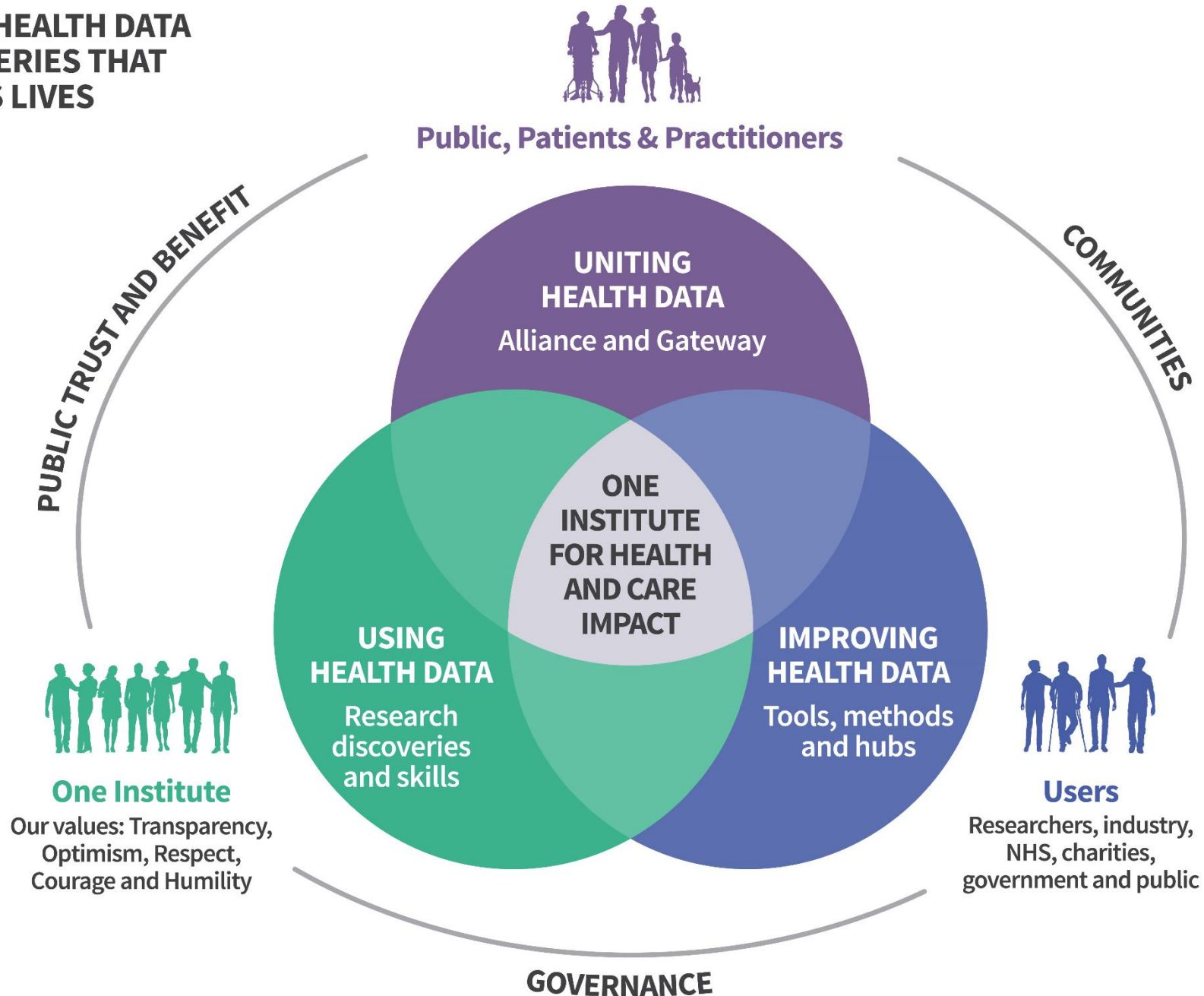
**Covid deaths for people with learning disability in England six times average**

Campaigners say report on first wave shows government failed to protect the most vulnerable

Source: Guardian



**UNITING THE UK'S HEALTH DATA  
TO ENABLE DISCOVERIES THAT  
IMPROVE PEOPLE'S LIVES**



**UNITING THE UK'S HEALTH DATA TO ENABLE DISCOVERIES THAT IMPROVE PEOPLE'S LIVES**



**Public, Patients & Practitioners**

2. Developing resources and minimum data set for care home adoption (DACHA)

3. Development and potential of a national social care dataset

5. The potential of individual-level linked social care data for research and analytics

6. Using routinely collected data: the importance of good quality public involvement

7. Afternoon Parallel sessions:  
Children & Young People  
Adults & Older Adults

1. Strengthening social care analytics

4. Improving patient flow between acute, community and social care

**PUBLIC TRUST AND BENEFIT**

**COMMUNITIES**



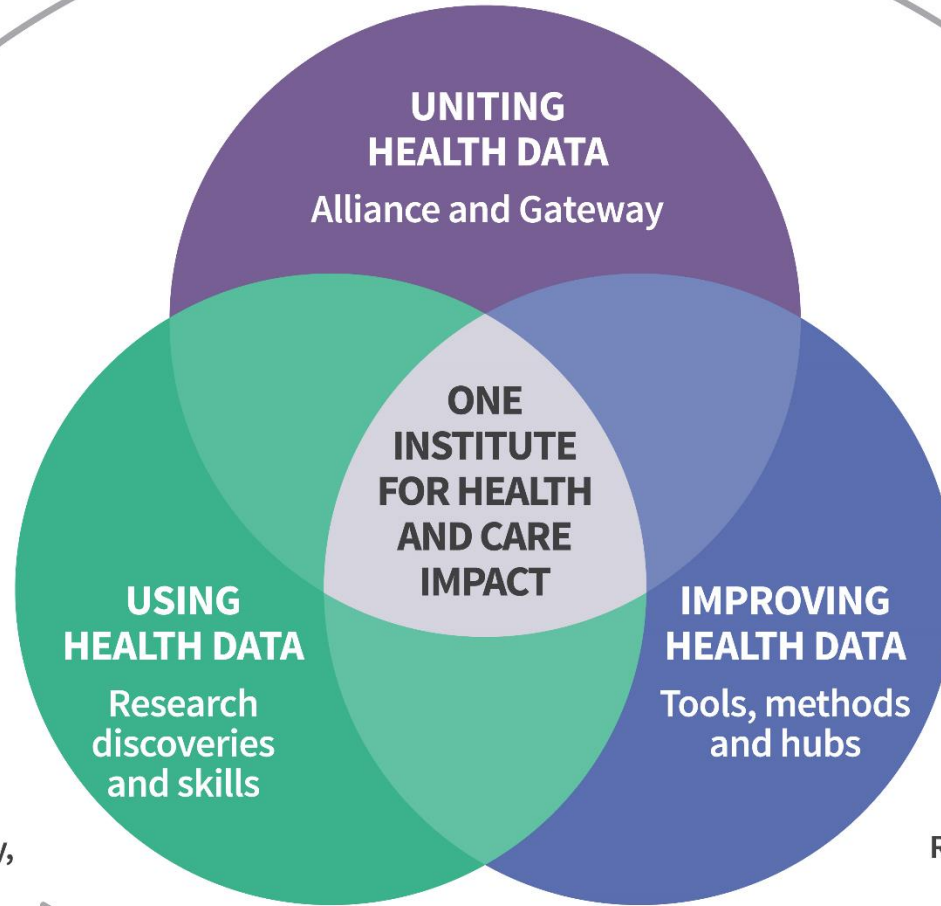
**One Institute**

Our values: Transparency, Optimism, Respect, Courage and Humility



**Users**

Researchers, industry, NHS, charities, government and public



**GOVERNANCE**